

# 2024

at Brazos Fellowship

## SUNDAY MORNINGS

### TOTAL AVERAGE ATTENDANCE

1,640 <sup>^</sup> 9% over 2023

**COFFEE SERVED**  
420 lbs

**CUPS OF COFFEE**  
12,600

**SALVATIONS**  
624

**BAPTISMS**  
184  
(87 adults, 49 youth,  
and 48 children)

**115**  
New  
Volunteers

**9,515**  
Hours Served

## AT THE MOVIES

**1,867**  
Average  
Attendance

**POPCORN SERVED**  
1,368 gal

**SODAS SERVED**  
5,833



# OUTREACH

## LOCAL

**\$16,000**  
Benevolence &  
Counseling Assistance



## GLOBAL

**\$12,000**  
Healing Faith

**\$6,600**  
Cross Community Church  
Yokohama, Japan

**\$10,896**  
Eliminate Hunger  
Campaign

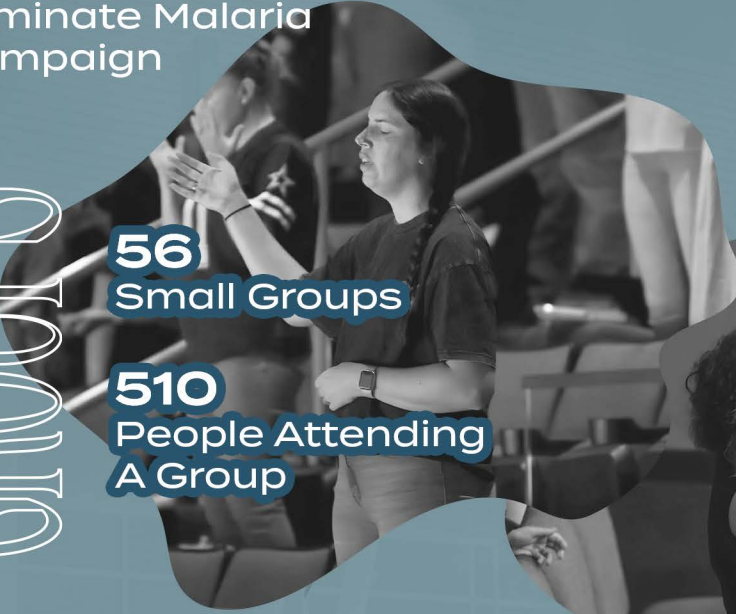
**\$6,815.67**  
BCS Together

**\$10,867.50**  
Eliminate Malaria  
Campaign

# GROUPS

**56**  
Small Groups

**510**  
People Attending  
A Group



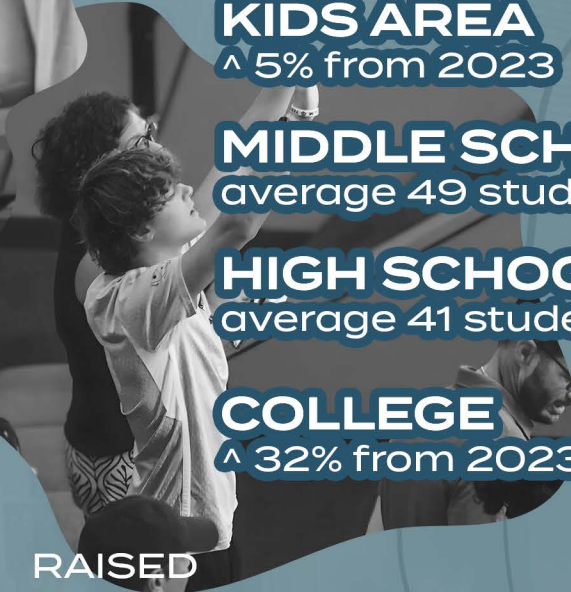
# MINISTRIES

**KIDS AREA**  
^ 5% from 2023

**MIDDLE SCHOOL**  
average 49 students

**HIGH SCHOOL**  
average 41 students

**COLLEGE**  
^ 32% from 2023



# THE BIG GIVE

RAISED  
**\$97,556.45**

## PARTNER ORGANIZATIONS:

**HOPE GATHERING, CHRISSY'S CLOSET, HOPE'S LOCKER,  
AND HEALING FAITH**



# THANK YOU

for being a part of what God is doing through Brazos Fellowship. We continue to be in awe of how Jesus is changing peoples' lives and are thankful for the role you play.

# BRAZOS FELLOWSHIP CHURCH

## Statements of Financial Position

December 31, 2024

### ASSETS:

Cash and Cash Equivalents	\$ 1,221,586
Fixed Assets	12,039,425
Depreciation	-3,540,141
Total Assets	<u>\$ 9,720,870</u>

### LIABILITIES AND EQUITY:

#### Liabilities:

Accounts payable and accrued expenses	\$ 26,855
Notes payable	4,378,025
Financing lease liability	<u>22,488</u>
Total liabilities	<u>4,427,368</u>

#### Equity:

Equity	<u>5,293,502</u>
Total Liabilities and Equity	<u>\$ 9,720,870</u>

These are unaudited financial statements

# BRAZOS FELLOWSHIP CHURCH

## Statements of Activities

	<u>Year Ended December 31, 2024</u>		
	<u>Unrestricted</u>	<u>Temporarily Restricted</u>	<u>Total</u>
SUPPORT, REVENUE, AND RECLASSIFICATIONS:			
Contributions	\$ 3,222,517	\$ 146,413	\$ 3,368,930
Other income	5,362	-	5,362
Net assets released from restrictions	148,900	(148,900)	-
Total Support and Revenue	3,374,292	(2,487)	3,374,292
EXPENSES:			
Program activities:			
Church activities	2,853,693	-	2,853,693
Supporting activities:			
Management and General	329,536	-	329,536
Fund-raising	-	-	-
Total Expenses	3,183,229	-	3,183,229
Change in Net Assets	191,063	(2,487)	191,063
Net Assets, Beginning of Year	4,566,137	2,487	4,568,624
Net Assets, End of Year	<u>\$ 4,759,687</u>	<u>\$ -</u>	<u>\$ 4,759,687</u>

These are unaudited financial statements